



CNC Machining



Gear Cutting



2015 ENGINEERING CATALOGUE

Fitting & Assembly



Gearbox Refurbishment



Dynamic Solutions from concept to manufacture
www.hercus.com.au

Dynamic Solutions from concept to manufacture

WARNING
Keep hands, clothing and body clear of tool/spindle rotation. Machine starts and moves automatically.

SAFETY INSTRUCTIONS
Before working near spindle:
1. Return all tools to magazine.
2. Set in manual mode, stop spindle.
3. Hang "Do not touch" sign on operator's panel.
4. Wear safety helmet.

WARNING
Keep hands clear of tool changer. Tool changer rotates automatically. Can cause severe injury. Turn off and lock out power at electrical panel before servicing.

WARNING
Before using the following cutting conditions:
- Cutting conditions that are the result of the Mazak Automatic Cutting Conditions Determination Function.
- Cutting conditions supported by the Machining Navigation Function.
- Cutting conditions for tools that are supported to be used by the Machining Navigation Function.

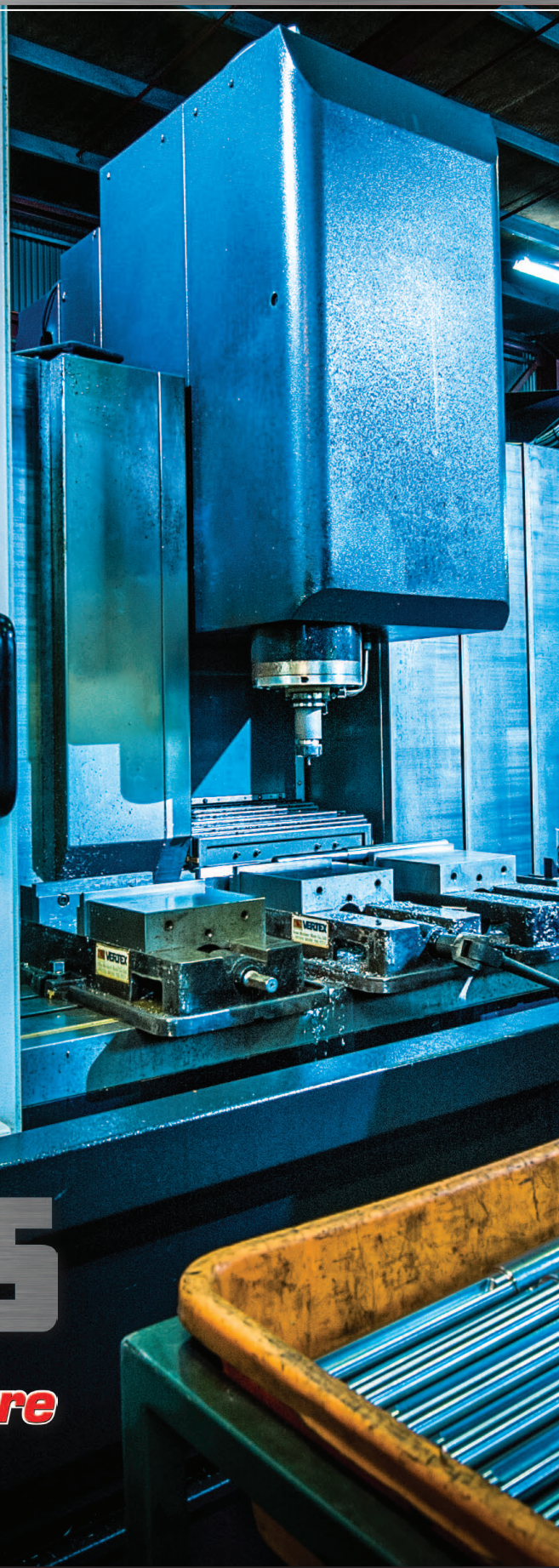
Confirm that every necessary precaution in regards to safe machine setup has been taken - especially for workpiece fixturing, clamping and tool setup. Confirm that the machine door is securely closed before starting machining. Failure to confirm safe machine setup may result in serious injury or death.

SAFETY INSTRUCTIONS

1. Read and understand the MAZAK Operator's Manual and all warnings on the machine before operating. Failure to follow these instructions and warnings can result in serious injury or death.
2. This machine starts and moves automatically. Never place any part of your body near or on moving parts of this machine.
3. Always stop the spindle completely before touching the work piece, tool or spindle.
4. Do not operate this machine unless all guards, interlocks and other safety devices are in place and functioning.
5. Always clamp work piece and cutting tool securely. Avoid excessive feeds and spindle speeds.
6. Remove rings, watches, jewelry and loose fitting clothing. Keep your hair away from moving parts of the machine.
7. Always wear safety glasses, safety shoes and hearing protection when operating this machine.
8. Service or installation of this machine must be performed by qualified personnel only, following procedures described in the MAZAK Maintenance Manual. Turn off and lock out power at main electrical panel before servicing.

It is the responsibility of the user to be sure that this machine is in safe operating condition at all times and that the operator follows the safe operating procedures described in the MAZAK Operator and Maintenance Manuals and all signs attached to this machine. If you have any questions concerning the safe operation of this machine, contact your supervisor or nearest MAZAK Distributor.

Please do not remove or defigure this sign.



HERCUS

Gear Your Future

2015 ENGINEERING CATALOGUE

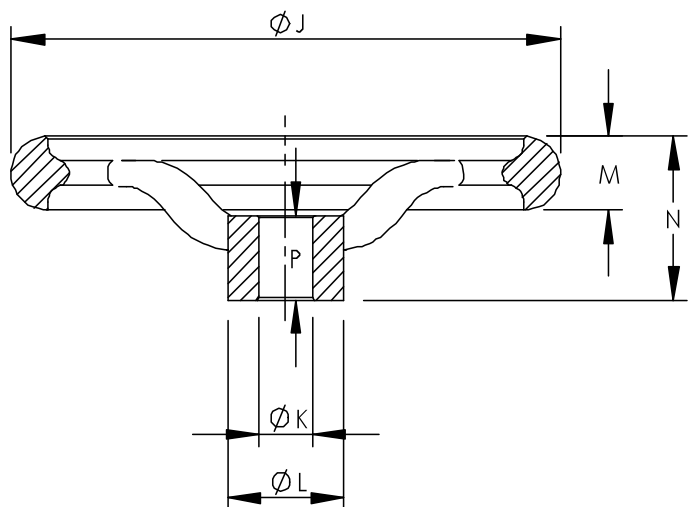


Contents

Dynamic solutions from concept to manufacture	4
CNC - Machining/Milling/Boring	6
CNC - Turning	7
Gear cutting	8
Fitting and assembly and Hercus Manufacturing Capabilities	9
Couplings	10
Chain Shaft Couplings	11
Spline Clutches	12 - 14
Torque Limiters	15 - 17
Torque Limiter Couplings	
Stock Gearing	18
Racks – 16 DP to 5DP	19
Racks – 1.5 Mod to 5 Mod	20
Spur Gears – 4.0 Mod	21
Spur Gears – 3.0 Mod	22
Spur Gears – 2.5 Mod	23
Spur Gears – 2.0 Mod	24
Spur Gears – 1.5 Mod	25
Spur Gears – 16 DP	26
Spur Gears – 14 DP	27
Spur Gears – 12 DP	30
Spur Gears – 10DP	31
Spur Gears – 8 DP	32
Spur Gears – 6 DP	33
Mitre Gears – 1.5 Mod to 4.0 Mod	34
Mitre Gears – 32 DP to 3 DP	35
Bevel Gears – Ratio 1:2 (1.5 to 4.0 Mod)	36
Bevel Gears – Ratio 1:3 & 1:4 (1.5 to 4.0 Mod)	37
Bevel Gears – Ratio 1:2 and 2:3 (6 – 12 DP)	38
Bevel Gears – Ratio 1:3, 1:4 & 1:6 (6 – 12 DP)	39
Stock Handwheels	40 - 43
Handwheels – 80mm to 500MM diameter	44 - 45
Stock Keysteel	46 - 50
Keyway Standards – Imperial and Metric	51
Keyway Tolerances	52 - 53
Worm Jacks	54 - 55
Screw Worm Jacks – HK Series	
Valve Operators	28
KV5 Input Stop	29
Reference Data	
Notes	
Gear Design Form	
Tooth Size Reference Chart	

This catalogue contains a comprehensive range of standardised stock components, designed for use as building blocks in the construction of all types of industrial machinery. The use of stock components in lieu of custom-made items can bring many advantages to both builder and user of the equipment in which they are incorporated. Costs may be lowered by bringing the economies of high volume production to areas where these could not otherwise have been attained. The use of standard, "off the shelf" items can significantly reduce both inventories and lead times. Repair and maintenance can be greatly simplified through the ready availability of interchangeable replacement parts.





Material: Mild Steel – Chrome Plated.

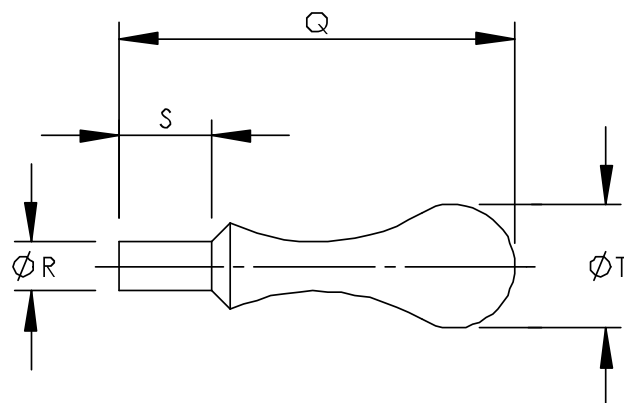
Cat. No.	J	K	L	M	N	P	Handle
HWCI / 0080	80	10	27	14	35	24	M6
HWCI / 0100	100	10	29	15	38	26	M6
HWCI / 0125	125	10	33	16	41	28	M6
HWCI / 0150	150	15	35	17	44	30	M8
HWCI / 0200	200	15	43	22	58	38	M10
HWCI / 0250	250	20	50	26	63	42	M10
HWCI / 0300	300	20	55	26	66	45	M12
HWCI / 0350	350	25	65	30	76	50	M16
HWCI / 0400	400	25	75	34	83	50	M16
HWCI / 0500	500	25	83	34	88	60	M16

Dimensions in mm

Material: Mild Steel – Chrome Plated.

Cat. No.	Q	R	S	T
GRIP / 0006	60	M6	10	16
GRIP / 0008	75	M8	12	20
GRIP / 0010	98	M10	18	25
GRIP / 0012	125	M12	25	32
GRIP / 0016	137	M16	25	36

Dimensions in mm





Dynamic Solutions from concept to manufacture



12 Camira Street, Regency Park, South Australia, 5010
P (61-8) 8346 5522 F (61-8) 8346 5811 E sales@hercus.com.au