

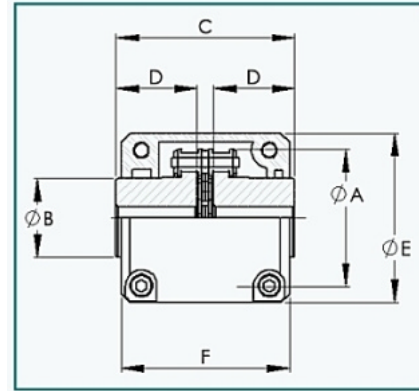


engineering cataloge 2008

CHAIN COUPLINGS

CHAIN SHAFT COUPLINGS

Chain couplings are ideal where high static or starting loads apply. They are easily disconnected and are composed of two hardened steel sprockets connected by duplex roller chain. Each coupling is supplied complete with an aluminium alloy casing.



Chain Coupling

Imperial	Bore		Dimensions				Weight	Dimensions		Weight
	Inches		Inches				Pounds	Inches		Pounds
Metric	mm		mm				kg	mm		kg
Cat. No.	Min.	Max.	A	B	C	D		E	F	
4012	0.433"	0.866"	2.40"	1.38"	3.126"	1.42"	1.76	2.95"	2.95"	0.66
	11	22	61	35	79.4	36	0.8	75	75	0.3
4016	0.591"	1.181"	3.03"	1.97"	3.126"	1.42"	3.09	3.62"	2.95"	0.88
	15	30	77	50	79.4	36	1.4	92	75	0.4
5016	0.591"	1.496"	3.78"	2.36"	3.925"	1.77"	5.73	4.37"	3.35"	1.32
	15	38	96	60	99.7	45	2.6	111	85	0.6
5018	0.748"	1.772"	4.17"	2.76"	3.925"	1.77"	7.72	4.80"	3.35"	1.76
	19	45	106	70	99.7	45	3.5	122	85	0.8
6018	0.866"	2.165"	5.00"	3.35"	4.705"	2.13"	13.23	5.59"	4.17"	2.65
	22	55	127	85	119.5	54	6.0	142	106	1.2
6022	0.984"	2.953"	5.95"	4.33"	4.705"	2.13"	20.94	6.58"	4.17"	3.53
	25	75	151	110	119.5	54	9.5	167	106	1.6
8018	1.181"	3.071"	6.26"	4.53"	5.874"	2.64"	30.87	7.32"	5.12"	5.51
	30	78	159	115	149.2	67	14.0	186	130	2.5
8022	1.378"	3.740"	7.95"	5.51"	5.874"	2.64"	44.09	8.66"	5.12"	5.95
	35	95	202	140	149.2	67	20.0	220	130	2.7
10020	1.496"	4.331"	9.13"	6.30"	7.906"	3.58"	74.96	9.76"	5.67"	6.61
	38	110	232	160	200.8	91	34.0	248	144	3.0

Dimensions in Inches and mm.

Transmission Capacity (kw)

Cat. No.	Shaft Dia.	Revolutions per Minute (RPM)																							
		10	25	50	100	200	300	400	500	600	800	1000	1200	1500	1800	2000	2500	3000	3600	4000	4800	5200	6000		
4012	22	0.22	0.58	1.15	1.73	2.63	3.46	4.15	4.96	5.67	7.01	8.53	9.68	11.6	13.7	14.8	17.9	20.7	24.1	26.3	30.8				
4016	30	0.41	1.03	2.06	3.09	4.69	6.17	7.41	8.85	10.1	12.5	15.3	17.3	21.0	24.4	26.3	31.9	37.0	43.0	46.9	54.9				
5016	38	0.78	1.95	3.91	5.86	8.92	11.7	14.1	16.8	19.2	23.8	28.9	32.9	39.9	46.4	50.0	60.6	70.4	81.6						
5018	45	0.99	2.48	4.95	7.43	11.3	14.9	17.8	21.3	24.4	30.1	36.6	41.6	50.5	58.8	63.4	76.8	89.2							
6018	55	1.87	4.67	9.33	14.0	21.3	28.0	33.6	40.1	45.9	56.8	69.1	78.4	95.2	111	120	145								
6022	75	2.51	6.31	12.5	18.8	28.6	37.7	45.3	54.1	61.9	76.5	93.1	105	128	149	161	195								
8018	78	4.14	10.3	20.7	31.0	47.2	62.1	74.5	89.0	101	126	153	174	211	246	265									
8022	95	5.93	14.8	29.6	44.5	67.2	89.0	106	127	146	180	219	249	302	352	379									
10020	110	9.33	23.3	46.6	70.0	106	140	168	200	229	283	345	392	476	554										